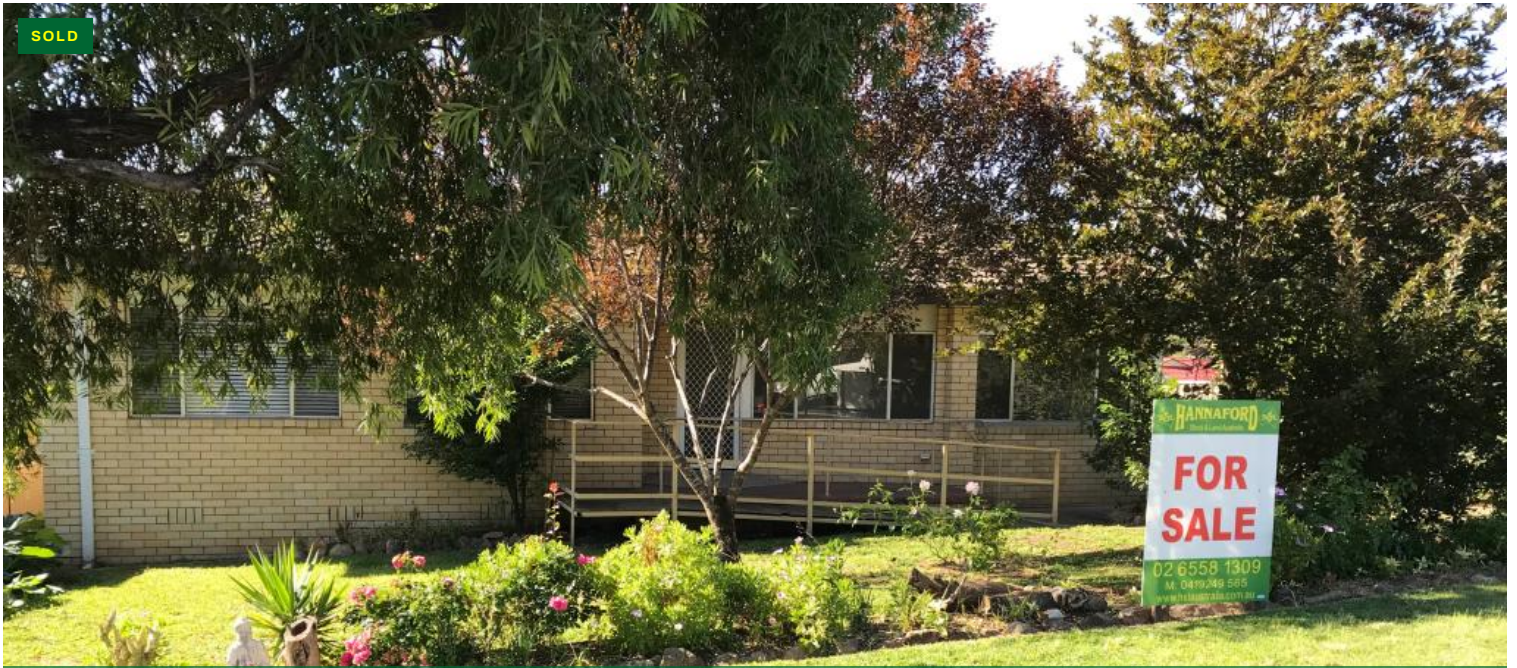


SOLD



14 Dawson Cres, Gloucester



The Perfect Investment

This 3 bedroom brick and tiled roof home is ready to start contributing to your investment portfolio. Located on an excellent level block, this neat and tidy home which was built in 1970, is close to schools and parks. It is well equipped for the elderly or disabled with easily removable ramps and hand rails in and around the home. Other features include reverse cycle air-conditioning, separate toilet and bathroom, dishwasher and ceiling fans. The fully fenced back yard has a gazebo with fabulous views of the Mograni range and has side access to the shed and garage. The gardens are low maintenance country cottage style.

A solid investment return.

The above information provided has been furnished to us by the vendor/s. We have not verified whether or not that information is accurate and do not have any belief in one way or the other in its accuracy. We do not accept any responsibility to any person for its accuracy and do no more than pass it on. All interested parties should make and rely upon their own inquiries in order to determine whether or not this information is in fact accurate.

3 Beds 1 Baths 1 Cars

696 m2

Price	SOLD
Property Type	Residential
Property ID	88
Land Area	696 m2

Agent Details

John Hannaford - 0419 249 565

Office Details

Hannaford Stock & Land Australia
 51 Church St Gloucester NSW 2422
 Australia
 02 6558 1309

